



# Monta Loma Summit Fall 2016

Gloria Higgins

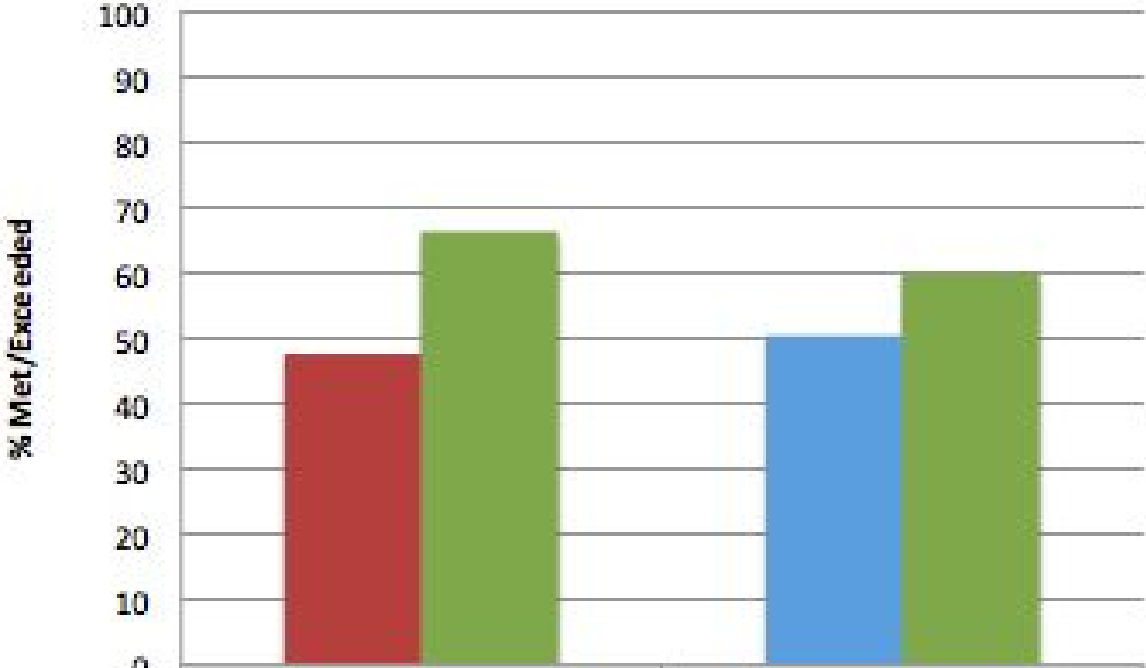
# Demographics



| School Year                          | 2013/2014 | 2014/2015 | 2015/2016 |
|--------------------------------------|-----------|-----------|-----------|
| Enrollment                           | 485       | 472       | 482       |
| Asian                                | 5.2%      | 5.5%      | 5.6%      |
| African American                     | 1%        | 1%        | 1%        |
| Hispanic/Latino                      | 51.3%     | 48.9%     | 48.3%     |
| White                                | 27.4%     | 29.2%     | 27.4%     |
| Students with Disabilities           | 12%       | 11.8%     | 9%        |
| English Language Learners            | 40.4%     | 35.2%     | 33%       |
| Percentage of ELLs who speak Spanish | 82.1%     | 80.2%     | 77%       |
| Socio-Economically Disadvantaged     | 53%       | 48.7%     | 45.6%     |

# CAASPP Results (ELA and Math)

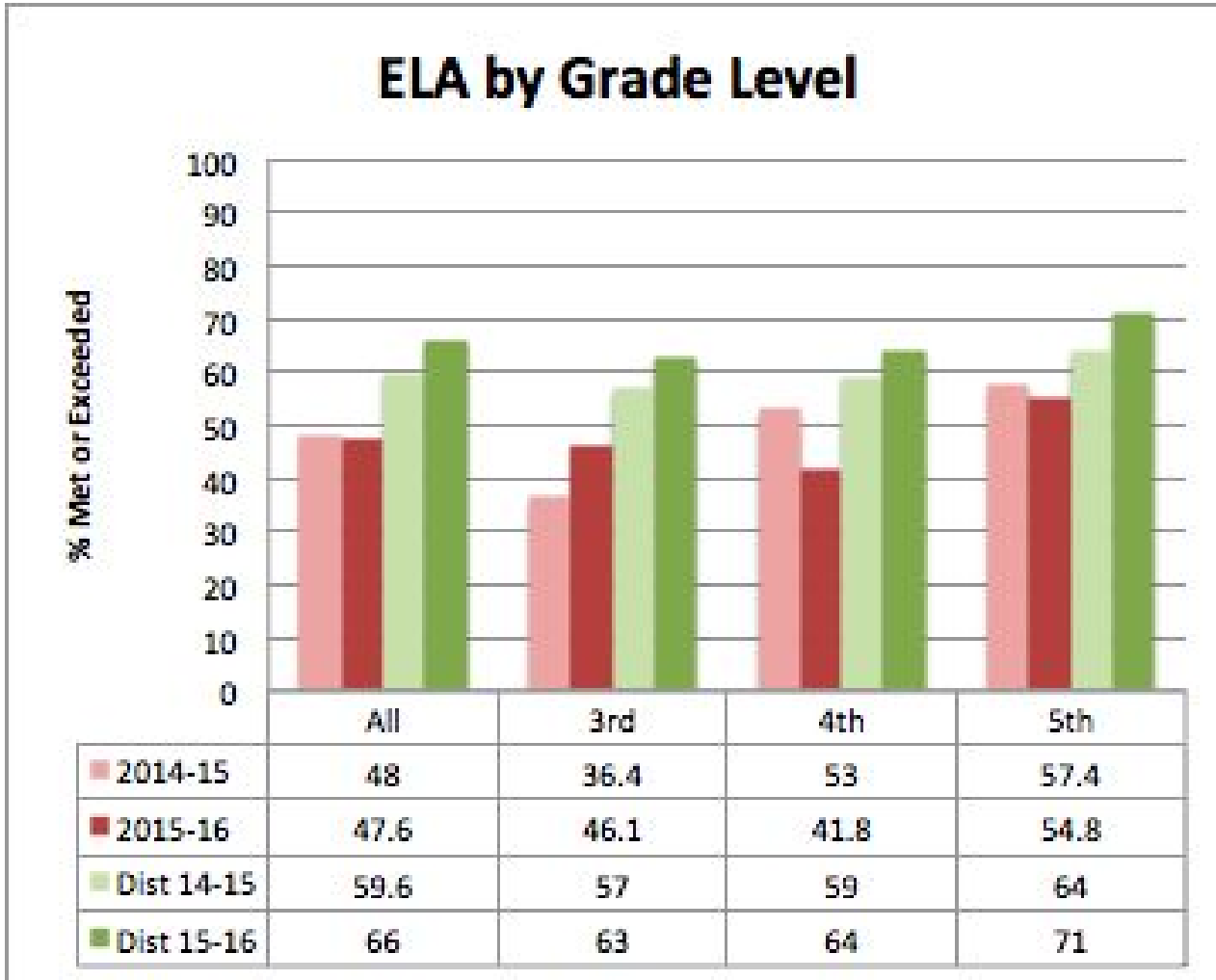
## ELA and Math 15/16



|            | ELA  | Math |
|------------|------|------|
| 2015-16    | 47.6 | 50.4 |
| Dist 15-16 | 66   | 60.1 |

| # tested | ELA | Math |
|----------|-----|------|
|          | 250 | 252  |

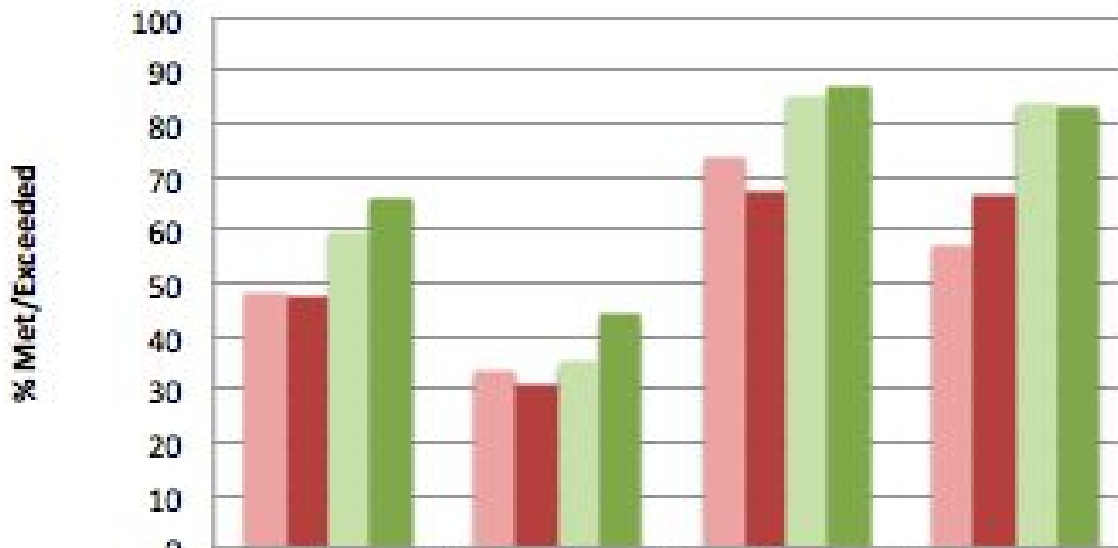
# CAASPP - ELA by grade level



| # tested | 14-15 | 15-16 |
|----------|-------|-------|
| All      | 242   | 250   |
| Gr 3     | 88    | 89    |
| Gr 4     | 83    | 79    |
| Gr 5     | 71    | 82    |

# CAASPP - ELA by Demographics

## ELA by Demographic



|            | All  | Hisp/Latino | White | Asian |
|------------|------|-------------|-------|-------|
| 2014-15    | 48   | 33.5        | 73.9  | 57.2  |
| 2015-16    | 47.6 | 30.9        | 67.1  | 66.7  |
| Dist 14-15 | 59.6 | 35          | 85    | 84    |
| Dist 15-16 | 66   | 44          | 87    | 83    |

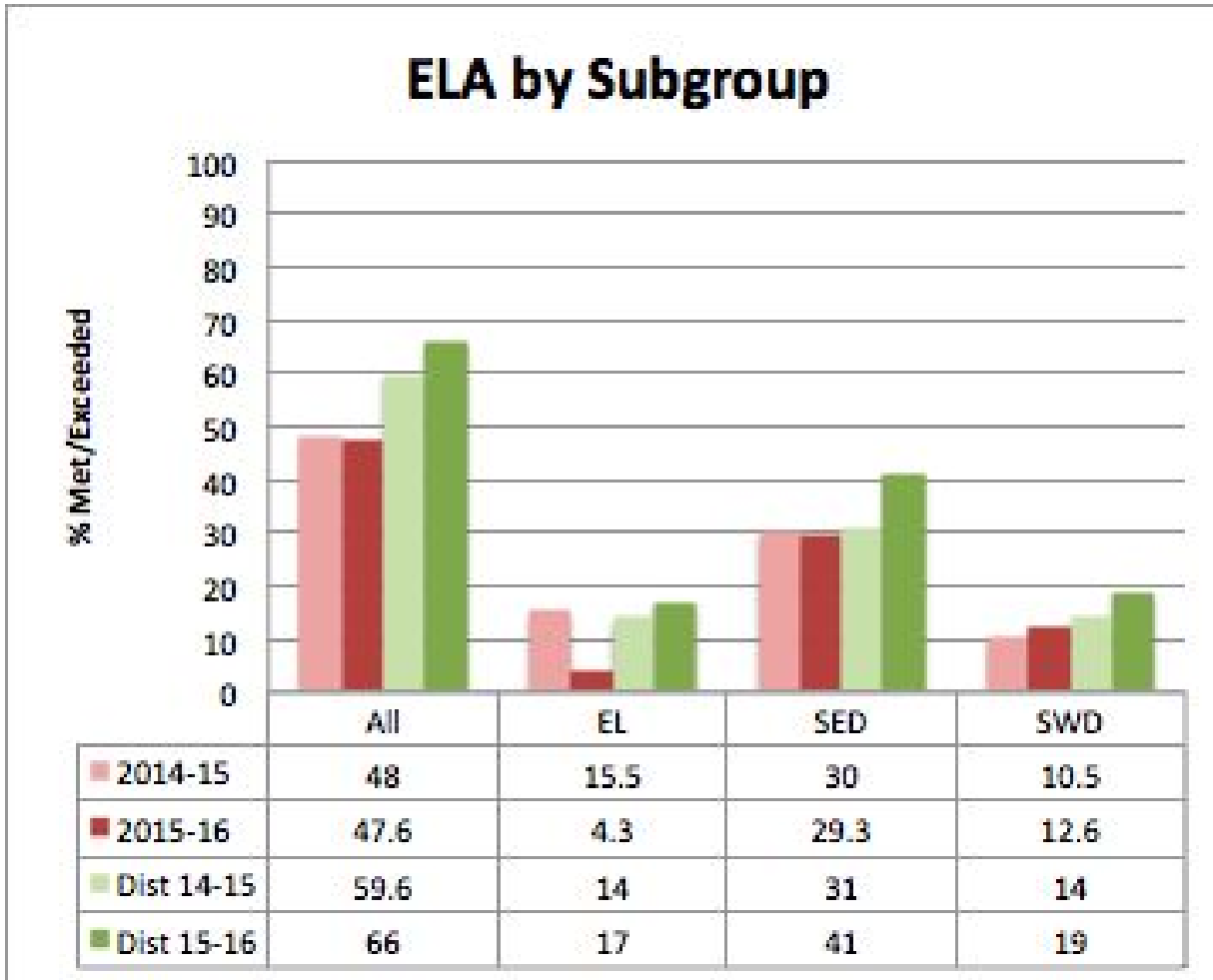
| All   | # tested | # met/ex |
|-------|----------|----------|
| 14-15 | 242      | 116      |
| 15-16 | 250      | 119      |

| Hispanic / Latino | # tested | # met/ex |
|-------------------|----------|----------|
| 14-15             | 135      | 45       |
| 15-16             | 126      | 39       |

| White | # tested | # met/ex |
|-------|----------|----------|
| 14-15 | 65       | 48       |
| 15-16 | 67       | 45       |

| Asian | # tested | # met/ex |
|-------|----------|----------|
| 14-15 | 16       | 9        |
| 15-16 | 14       | 9        |

# CAASPP - ELA by subgroup



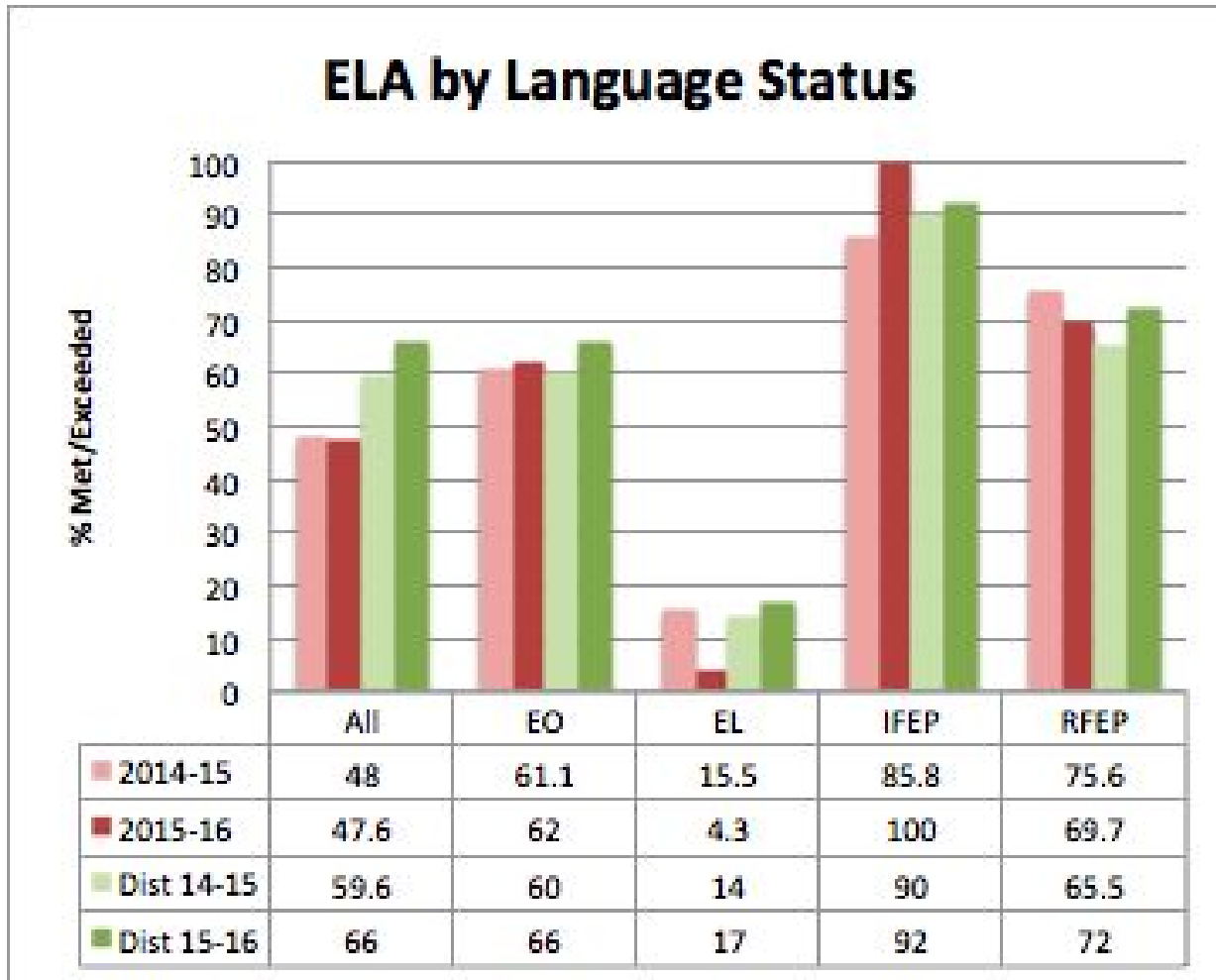
| All   | # tested | # met/ex |
|-------|----------|----------|
| 14-15 | 242      | 116      |
| 15-16 | 250      | 119      |

| ELs   | # tested | # met/ex |
|-------|----------|----------|
| 14-15 | 84       | 13       |
| 15-16 | 70       | 3        |

| SED   | # tested | # met/ex |
|-------|----------|----------|
| 14-15 | 130      | 39       |
| 15-16 | 116      | 34       |

| SWD   | # tested | # met/ex |
|-------|----------|----------|
| 14-15 | 48       | 5        |
| 15-16 | 32       | 8        |

# CAASPP - ELA by Language Status



| EL    | # tested | # met/ex |
|-------|----------|----------|
| 14-15 | 84       | 13       |
| 15-16 | 70       | 3        |

| EO    | # tested | # met/ex |
|-------|----------|----------|
| 14-15 | 113      | 69       |
| 15-16 | 142      | 88       |

| IFEP  | # tested | # met/ex |
|-------|----------|----------|
| 14-15 | 7        | 6        |
| 15-16 | 5        | 5        |

| RFEP  | # tested | # met/ex |
|-------|----------|----------|
| 14-15 | 37       | 28       |
| 15-16 | 33       | 23       |

# CAASPP - ELA pivot table

Linear View

Smarter Summative 15-16

Select score to compare:

|                         | Standard Not Met |       | Standard Nearly Met |       | Standard Met |       | Standard Exceeded |       | Totals |       |
|-------------------------|------------------|-------|---------------------|-------|--------------|-------|-------------------|-------|--------|-------|
|                         | #                | %     | #                   | %     | #            | %     | #                 | %     | #      | %     |
| Smarter Summative 14-15 | 34               | 79.1% | 9                   | 20.9% | 0            | 0.0%  | 0                 | 0.0%  | 43     | 30.7% |
| Standard Not Met        | 34               | 79.1% | 9                   | 20.9% | 0            | 0.0%  | 0                 | 0.0%  | 43     | 30.7% |
| Standard Nearly Met     | 8                | 20.0% | 21                  | 52.5% | 10           | 25.0% | 1                 | 2.5%  | 40     | 28.6% |
| Standard Met            | 1                | 4.2%  | 2                   | 8.3%  | 12           | 50.0% | 9                 | 37.5% | 24     | 17.1% |
| Standard Exceeded       | 0                | 0.0%  | 0                   | 0.0%  | 8            | 24.2% | 25                | 75.8% | 33     | 23.6% |
| Totals                  | 43               | 30.7% | 32                  | 22.9% | 30           | 21.4% | 35                | 25.0% | 140    | 100%  |

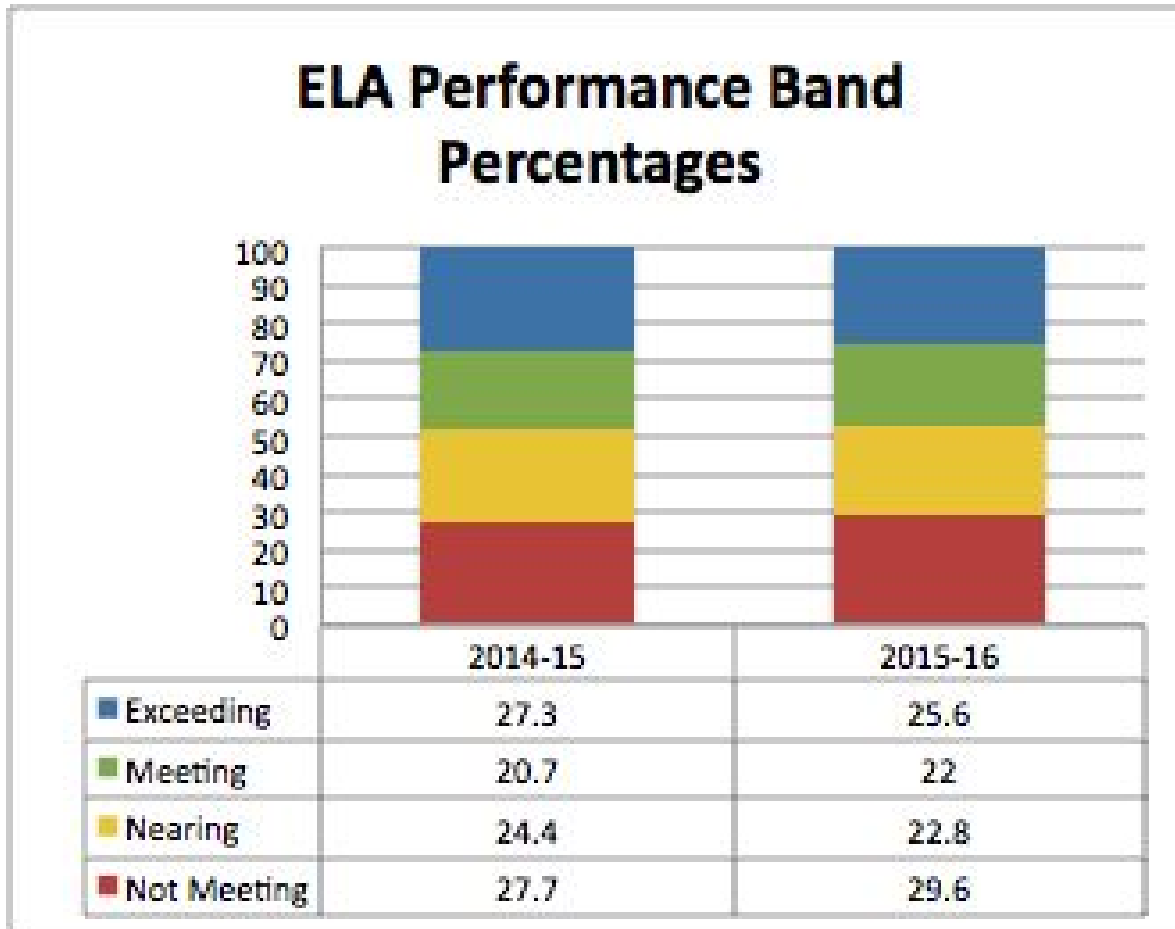
compare:

|                     | Rising |       | Maintaining |       | Decreasing |       |
|---------------------|--------|-------|-------------|-------|------------|-------|
|                     | #      | %     | #           | %     | #          | %     |
| Standard Not Met    | 9      | 6.4%  | 34          | 24.3% | 0          | 0.0%  |
| Standard Nearly Met | 11     | 7.9%  | 21          | 15.0% | 8          | 5.7%  |
| Standard Met        | 9      | 6.4%  | 12          | 8.6%  | 3          | 2.1%  |
| Standard Exceeded   | 0      | 0.0%  | 25          | 17.9% | 8          | 5.7%  |
| Totals              | 29     | 20.7% | 92          | 65.7% | 19         | 13.6% |



# Performance Band Movement - ELA

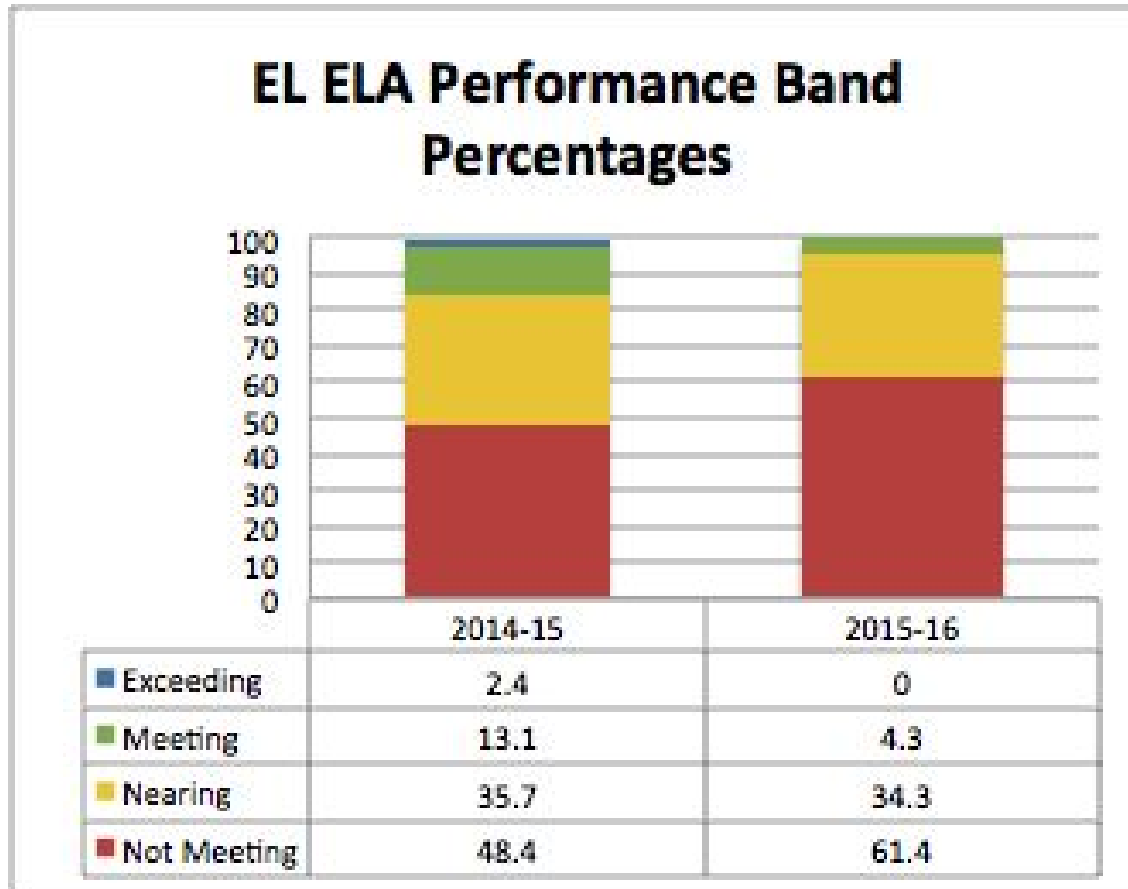
Percentage of students



| Number of students | 14-15 | 15-16 |
|--------------------|-------|-------|
| Exceeded           | 66    | 64    |
| Met                | 50    | 55    |
| Nearly Met         | 59    | 57    |
| Not Met            | 67    | 74    |

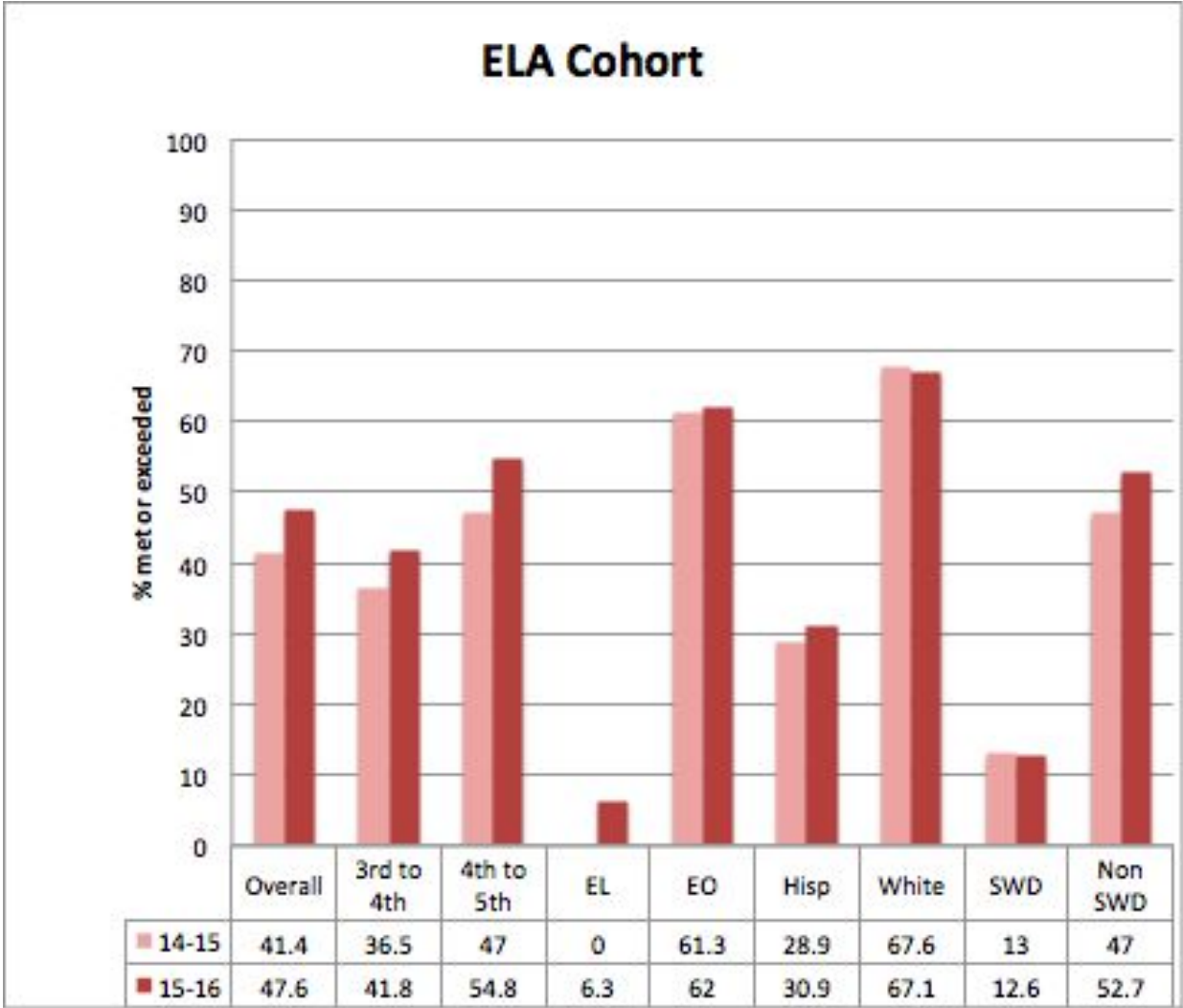
# Performance Band Movement- ELA for English Learners

Percentage of students

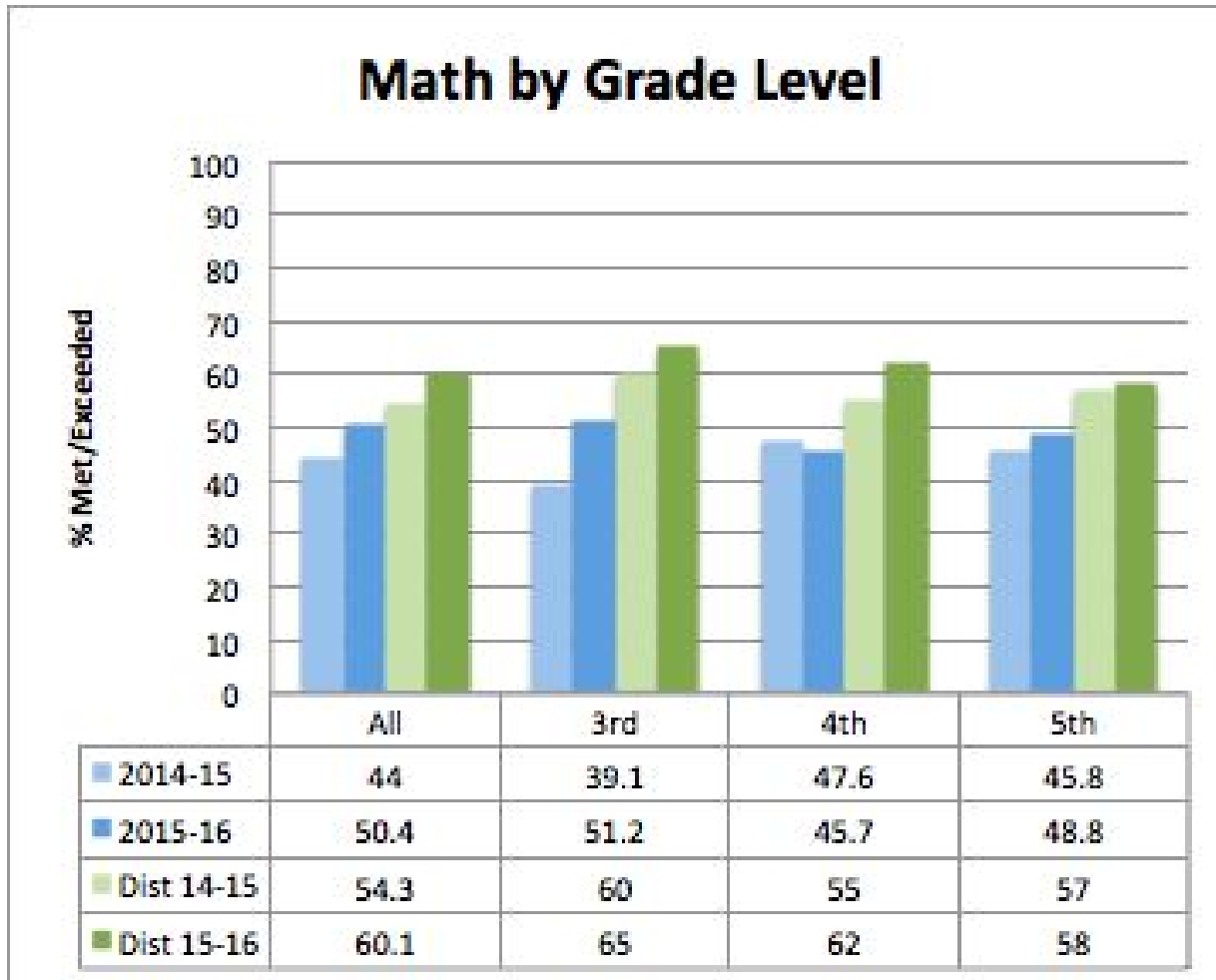


| Number of students | 14-15 | 15-16 |
|--------------------|-------|-------|
| Exceeded           | 2     | 0     |
| Met                | 11    | 3     |
| Nearly Met         | 30    | 24    |
| Not Met            | 41    | 43    |

# Cohort Comparison - ELA



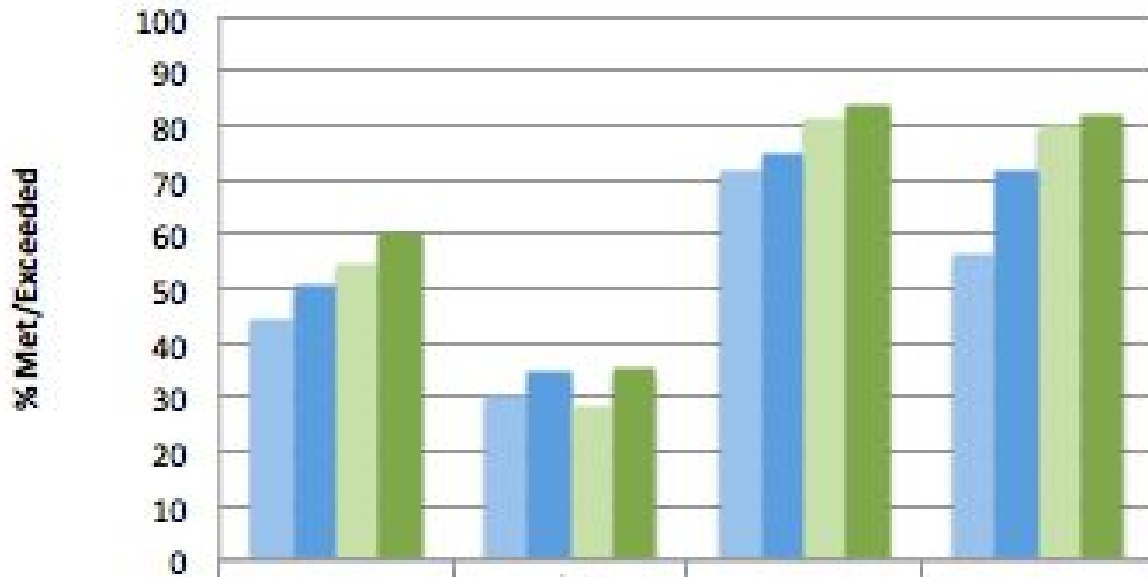
# CAASPP - Math by grade level



| # tested | 14-15 | 15-16 |
|----------|-------|-------|
| Gr 3     | 92    | 89    |
| Gr 4     | 84    | 81    |
| Gr 5     | 72    | 82    |

# CAASPP - Math by Demographics

## Math by Demographic



|            | All  | Hisp/Latino | White | Asian |
|------------|------|-------------|-------|-------|
| 2014-15    | 44   | 30.4        | 71.7  | 56.3  |
| 2015-16    | 50.4 | 34.9        | 74.6  | 71.5  |
| Dist 14-15 | 54.3 | 28          | 81    | 80    |
| Dist 15-16 | 60.1 | 35          | 84    | 82    |

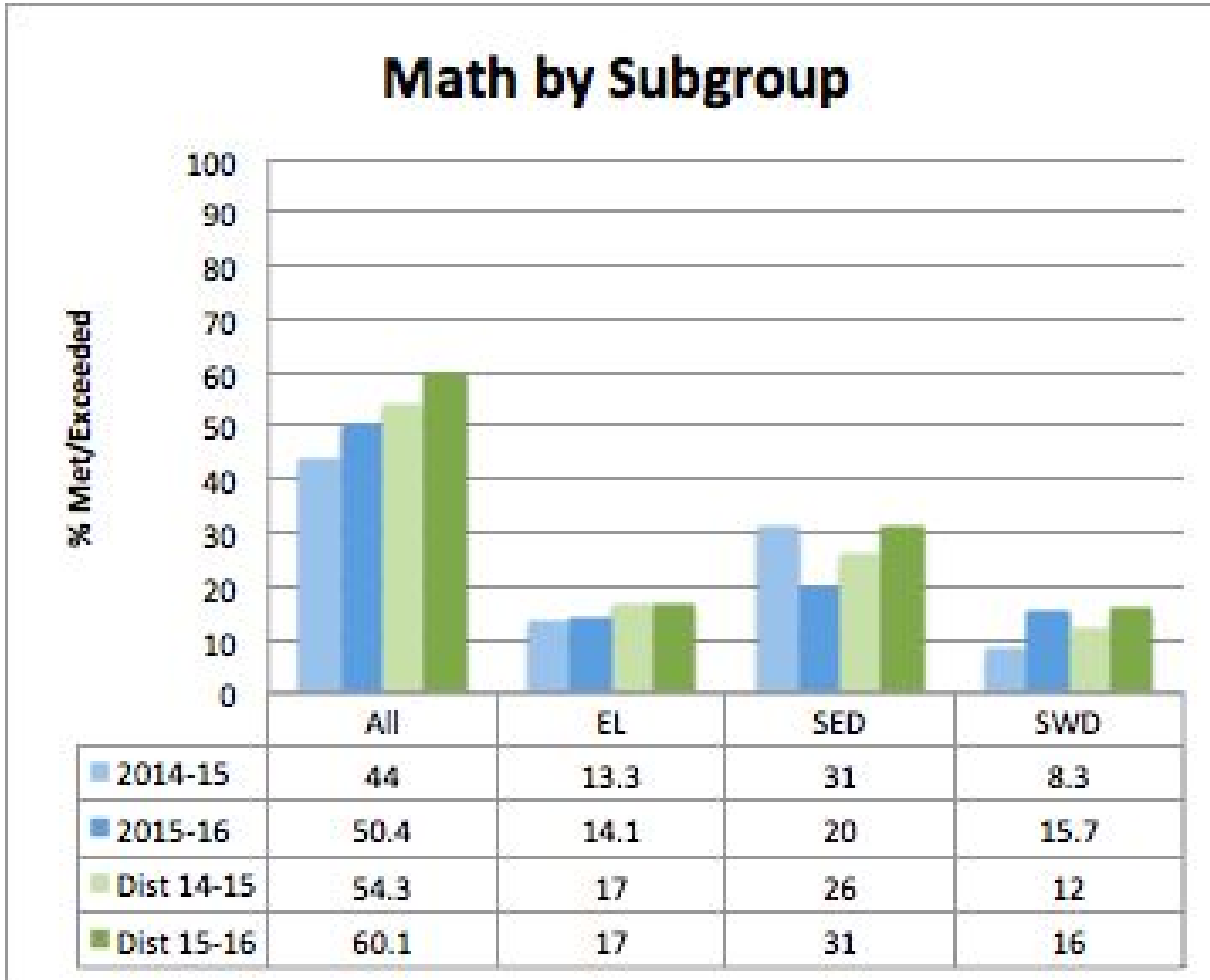
| All   | # tested | # met/ex |
|-------|----------|----------|
| 14-15 | 248      | 109      |
| 15-16 | 252      | 127      |

| Hispanic / Latino | # tested | # met/ex |
|-------------------|----------|----------|
| 14-15             | 135      | 41       |
| 15-16             | 126      | 44       |

| White | # tested | # met/ex |
|-------|----------|----------|
| 14-15 | 67       | 48       |
| 15-16 | 67       | 50       |

| Asian | # tested | # met/ex |
|-------|----------|----------|
| 14-15 | 16       | 9        |
| 15-16 | 14       | 10       |

# CAASPP - Math by subgroup



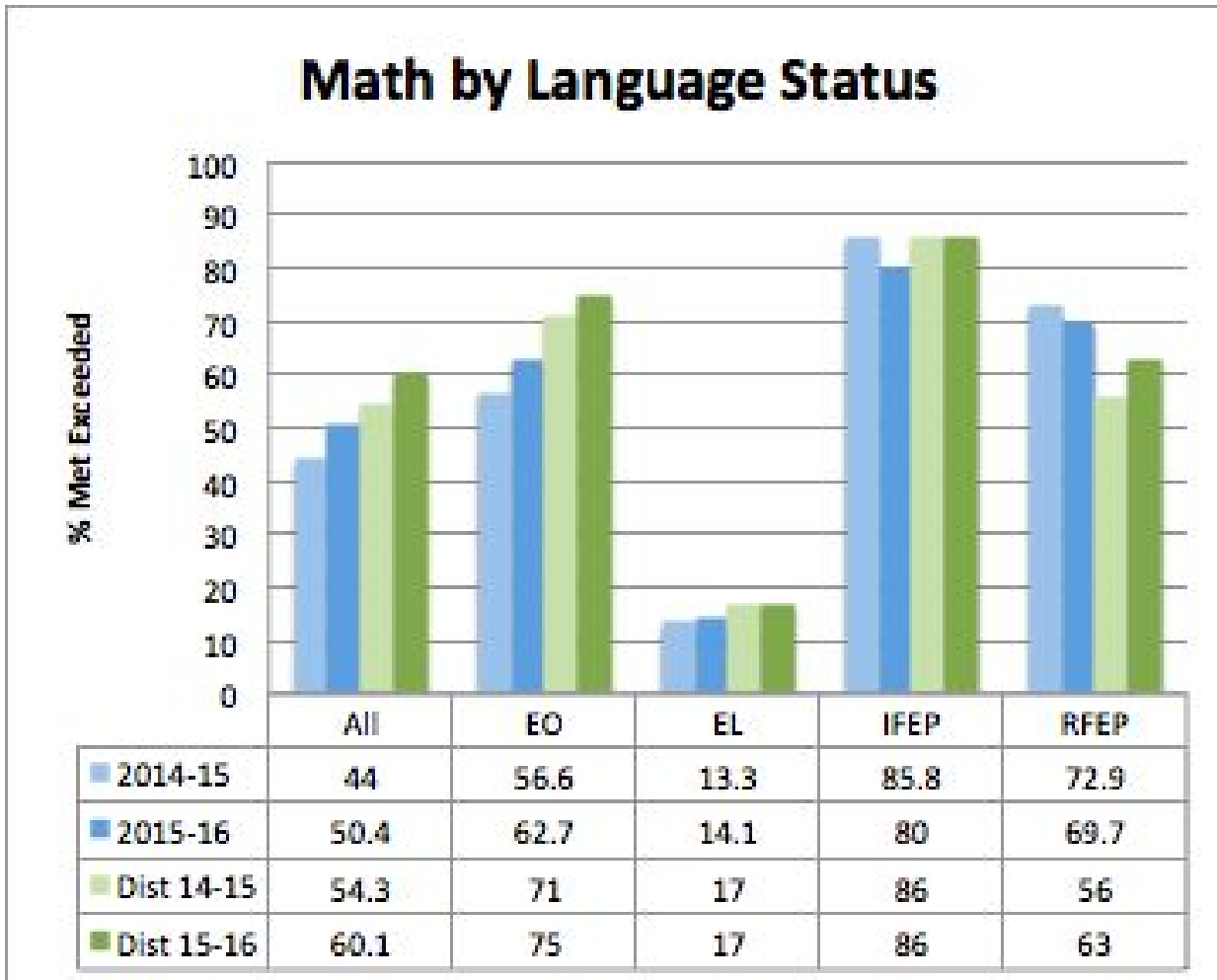
| All   | # tested | # met/ex |
|-------|----------|----------|
| 14-15 | 248      | 109      |
| 15-16 | 252      | 127      |

| ELs   | # tested | # met/ex |
|-------|----------|----------|
| 14-15 | 90       | 12       |
| 15-16 | 71       | 10       |

| SED   | # tested | # met/ex |
|-------|----------|----------|
| 14-15 | 133      | 35       |
| 15-16 | 116      | 23       |

| SWD   | # tested | # met/ex |
|-------|----------|----------|
| 14-15 | 48       | 4        |
| 15-16 | 32       | 5        |

# CAASPP - Math by Language Status



| EL    | # tested | # met/ex |
|-------|----------|----------|
| 14-15 | 90       | 12       |
| 15-16 | 71       | 10       |

| EO    | # tested | # met/ex |
|-------|----------|----------|
| 14-15 | 113      | 64       |
| 15-16 | 142      | 89       |

| IFEP  | # tested | # met/ex |
|-------|----------|----------|
| 14-15 | 7        | 6        |
| 15-16 | 5        | 4        |

| RFEP  | # tested | # met/ex |
|-------|----------|----------|
| 14-15 | 37       | 27       |
| 15-16 | 33       | 23       |

# CAASPP - Math pivot table

## Smarter Summative 15-16

Select score to compare:

Linear View

Smarter Summative 14-15

Compare:

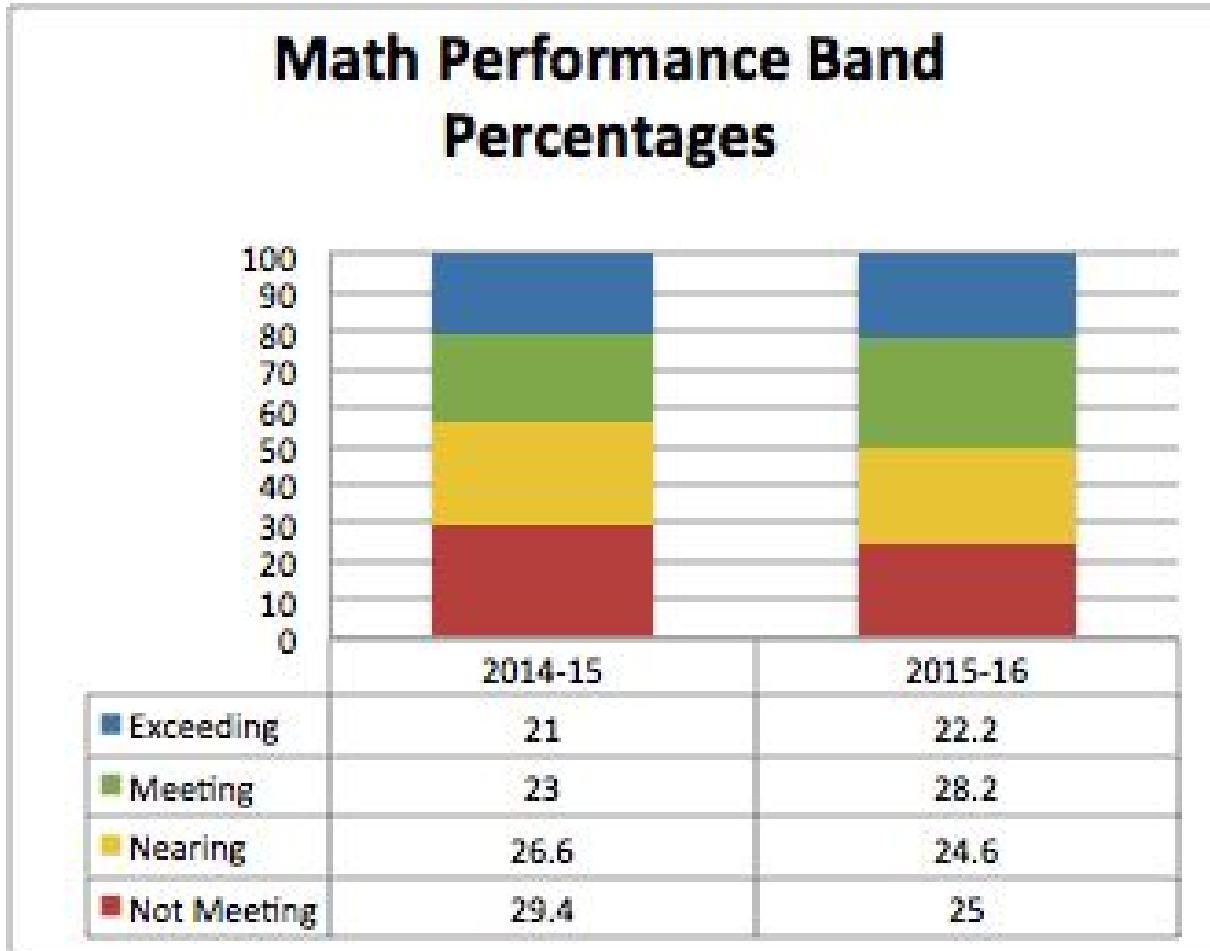
|                     | Standard Not Met |       | Standard Nearly Met |       | Standard Met |       | Standard Exceeded |       | Totals     |       |
|---------------------|------------------|-------|---------------------|-------|--------------|-------|-------------------|-------|------------|-------|
|                     | #                | %     | #                   | %     | #            | %     | #                 | %     | #          | %     |
| Standard Not Met    | <u>30</u>        | 78.9% | <u>7</u>            | 18.4% | <u>1</u>     | 2.6%  | 0                 | 0.0%  | <u>38</u>  | 27.0% |
| Standard Nearly Met | <u>11</u>        | 25.0% | <u>20</u>           | 45.5% | <u>12</u>    | 27.3% | <u>1</u>          | 2.3%  | <u>44</u>  | 31.2% |
| Standard Met        | 0                | 0.0%  | <u>10</u>           | 27.8% | <u>16</u>    | 44.4% | <u>10</u>         | 27.8% | <u>36</u>  | 25.5% |
| Standard Exceeded   | 0                | 0.0%  | 0                   | 0.0%  | <u>3</u>     | 13.0% | <u>20</u>         | 87.0% | <u>23</u>  | 16.3% |
| Totals              | <u>41</u>        | 29.1% | <u>37</u>           | 26.2% | <u>32</u>    | 22.7% | <u>31</u>         | 22.0% | <u>141</u> | 100%  |

|                     | Rising    |       | Maintaining |       | Decreasing |       |
|---------------------|-----------|-------|-------------|-------|------------|-------|
|                     | #         | %     | #           | %     | #          | %     |
| Standard Not Met    | <u>8</u>  | 5.7%  | <u>30</u>   | 21.3% | 0          | 0.0%  |
| Standard Nearly Met | <u>13</u> | 9.2%  | <u>20</u>   | 14.2% | <u>11</u>  | 7.8%  |
| Standard Met        | <u>10</u> | 7.1%  | <u>16</u>   | 11.3% | <u>10</u>  | 7.1%  |
| Standard Exceeded   | 0         | 0.0%  | <u>20</u>   | 14.2% | <u>3</u>   | 2.1%  |
| Totals              | <u>31</u> | 22.0% | <u>86</u>   | 61.0% | <u>24</u>  | 17.0% |



# Performance Band Movement - Math

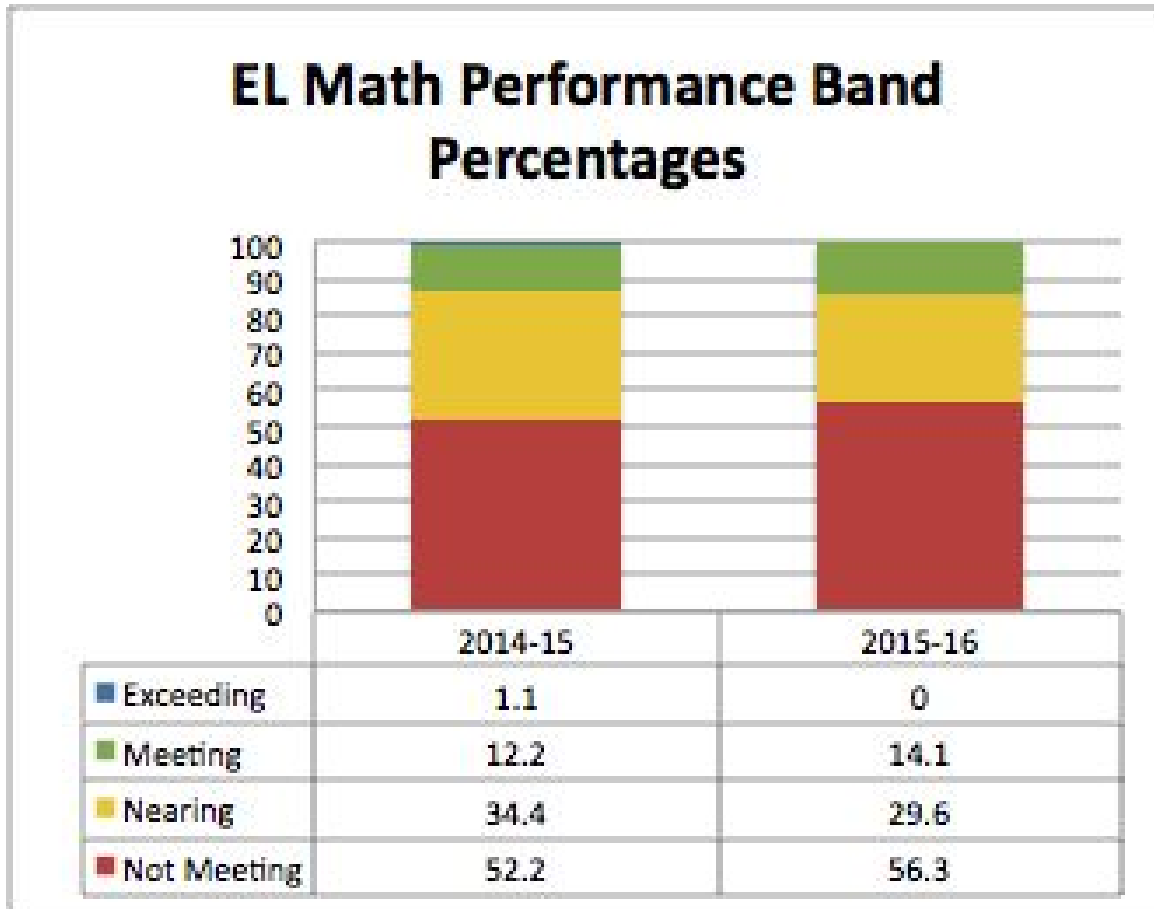
Percentage of students



| Number of students | 14-15 | 15-16 |
|--------------------|-------|-------|
| Exceeded           | 52    | 56    |
| Met                | 57    | 71    |
| Nearly Met         | 66    | 62    |
| Not Met            | 73    | 63    |

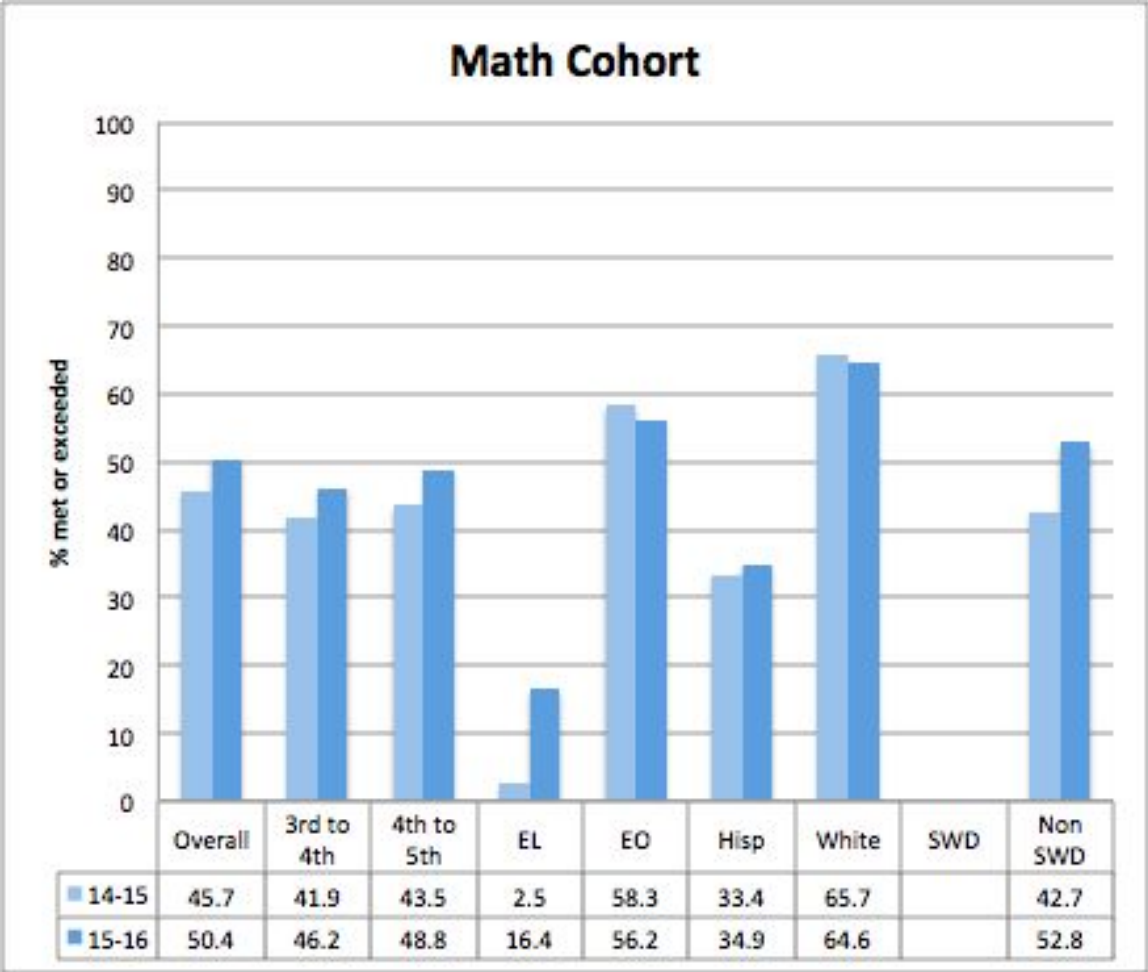
# Performance Band Movement- Math for English Learners

Percentage of students



| Number of students | 14-15 | 15-16 |
|--------------------|-------|-------|
| Exceeded           | 1     | 0     |
| Met                | 11    | 10    |
| Nearly Met         | 31    | 21    |
| Not Met            | 47    | 40    |

# Cohort Comparison - Math



# CELDT

Linear View

## CELDT 15-16

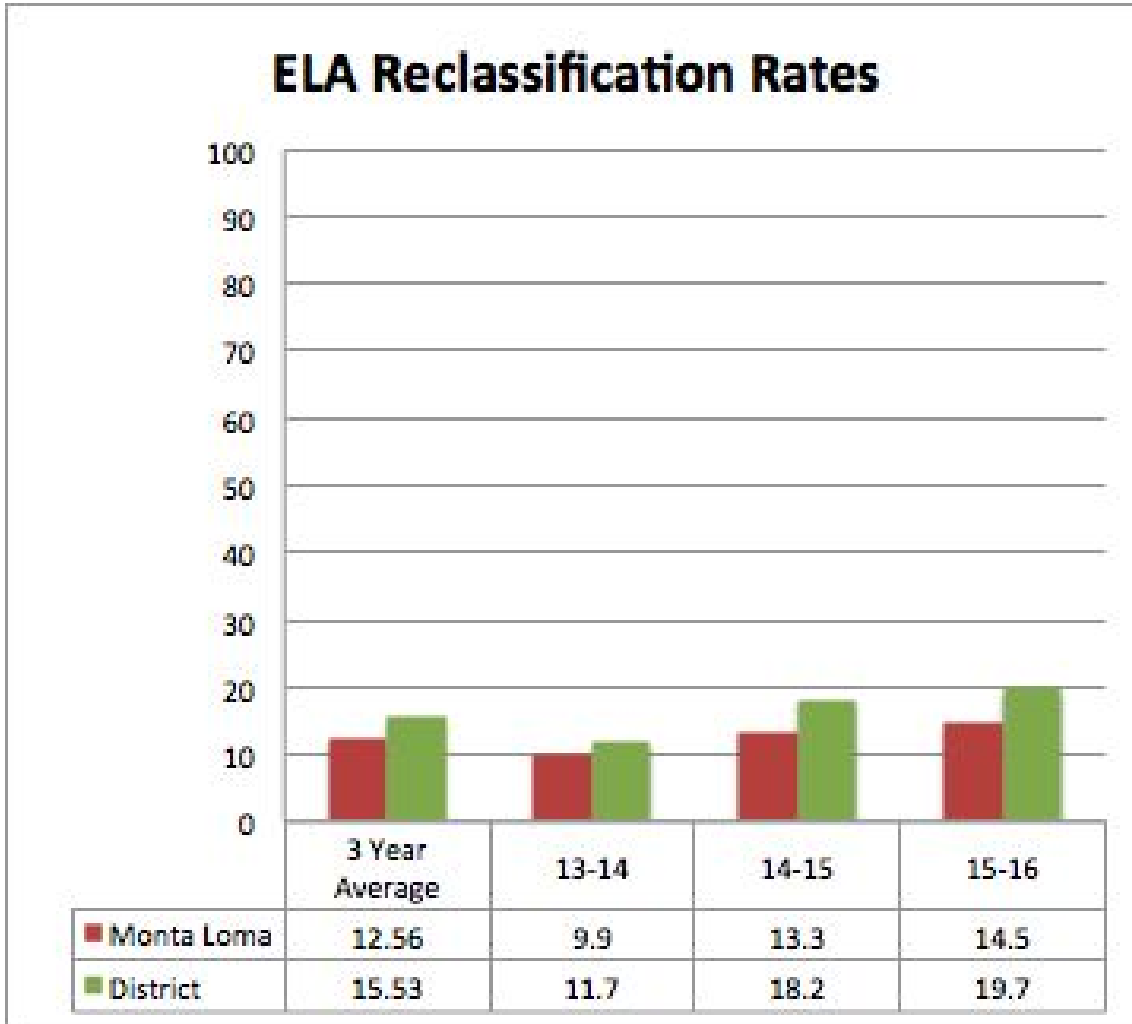
Select score to compare:

14-15

|       |                    | Beginning |      | Early Intermediate |       | Intermediate |       | Early Advanced |       | Advanced |        | Totals |       |
|-------|--------------------|-----------|------|--------------------|-------|--------------|-------|----------------|-------|----------|--------|--------|-------|
|       |                    | #         | %    | #                  | %     | #            | %     | #              | %     | #        | %      | #      | %     |
| 14-15 | Beginning          | 1         | 4.3% | 9                  | 39.1% | 13           | 56.5% | 0              | 0.0%  | 0        | 0.0%   | 23     | 20.5% |
|       | Early Intermediate | 1         | 4.0% | 7                  | 28.0% | 13           | 52.0% | 4              | 16.0% | 0        | 0.0%   | 25     | 22.3% |
|       | Intermediate       | 1         | 2.9% | 1                  | 2.9%  | 17           | 50.0% | 14             | 41.2% | 1        | 2.9%   | 34     | 30.4% |
|       | Early Advanced     | 1         | 3.6% | 1                  | 3.6%  | 2            | 7.1%  | 12             | 42.9% | 12       | 42.9%  | 28     | 25.0% |
|       | Advanced           | 0         | 0.0% | 0                  | 0.0%  | 0            | 0.0%  | 0              | 0.0%  | 2        | 100.0% | 2      | 1.8%  |
|       | Totals             | 4         | 3.6% | 18                 | 16.1% | 45           | 40.2% | 30             | 26.8% | 15       | 13.4%  | 112    | 100%  |

|                    | Rising |       | Maintaining |       | Decreasing |      |
|--------------------|--------|-------|-------------|-------|------------|------|
|                    | #      | %     | #           | %     | #          | %    |
| Beginning          | 22     | 19.6% | 1           | 0.9%  | 0          | 0.0% |
| Early Intermediate | 17     | 15.2% | 7           | 6.3%  | 1          | 0.9% |
| Intermediate       | 15     | 13.4% | 17          | 15.2% | 2          | 1.8% |
| Early Advanced     | 12     | 10.7% | 12          | 10.7% | 4          | 3.6% |
| Advanced           | 0      | 0.0%  | 2           | 1.8%  | 0          | 0.0% |
| Totals             | 66     | 58.9% | 39          | 34.8% | 7          | 6.3% |

# Reclassification



| School Year | 13-14 | 14-15 | 15-16 |
|-------------|-------|-------|-------|
| # ELs       | 196   | 161   | 159   |
| # RFEP      | 41    | 51    | 24    |
| % RFEP      | 9.9   | 13.3  | 14.5  |

# 2015-16 Goals

**English Language Arts:** 10.4 percentage point increase in the percentage of students meeting or exceeding standards in ELA.

- Goal Not Met: 1.4 percentage point decrease

**Mathematics:** 10.8 percentage point increase in the percentage of students meeting or exceeding standards in mathematics

- Goal Not Met: 5.6 percentage point increase

**English Language Development:** By June 2016, there will be a 17 percentage point increase in the percentage of ELLs meeting or exceeding standards in ELA and Math

- Goal Not Met: 21.2 percentage point decrease in ELA and 0.8 percentage point increase in Math.

**Climate Goal:** increase in attendance from 95.96% to 97%

- Goal Not Met: increase to 96.39%

# 2016-17 Goals

**English Language Arts:** By June 2017, there will be a 6 percentage point increase in the number of students meeting or exceeding standards in English Language Arts as measured by district assessments and CAASPP (47.3% - 53.3%).

**Mathematics:** By June 2017, there will be a 5 percentage point increase in the number of students meeting or exceeding standards in Mathematics as measured by district assessments and CAASPP (50.3% - 55.3%).

**Closing the Achievement Gap:** By June 2017, there will be a 10 percentage point increase in the number of English Language Learners meeting or exceeding standards in English Language Arts as measured by district assessments and CAASPP (4.3% - 14.3%).

By June 2017, there will be a 9 percentage point increase in the number of English Language Learners meeting or exceeding standards in Mathematics as measured by district assessments and CAASPP (14.1% -23.1%).

**Human Capital (PLC):** Staff at Monta Loma will cultivate high functioning teams through the development of collaboration protocols using Professional Learning Community strategies.

**Inclusive and Supportive Culture:** Monta Loma Staff will use our Core Values and the Responsive School Model to re-establish school-wide, classroom, and individual behavioral supports necessary for all students to succeed.

# Successes and Celebrations

Academic gains in 3rd grade.

IFEP and RFEP attainment

Growth in Math

Rising reclassification rates

Cohort growth

“Actionable Data”

Strong Monta Loma Identity with Core Values.

Strong foundation for next steps (responsive classroom, Rtl)

Strong parent community (SSC, ELAC, PTA)



# English Language Development

Designated ELD teacher reduces class size for emerging and expanding speakers.

Placement of students by speaking/listening, not overall scores

Before School LTEL intervention with Lexia Rapid and English 3D

Benchmark Advance, academic vocabulary, language objectives, and structured oral language routines support Integrated ELD.

# Professional Learning Communities

13 teachers attended District PLC training

Grade level and site PLCs inclusive of additional staff (coach, intervention, ELD, RS, SCEF)

Professional learning using PLC Rubrics from Learning by Doing

Leadership Team

Development of classified staff as part of our PLC (SCEF in LT, Noon duty training with Playworks Principles)

# Intervention-WIN

Master Schedule supports dedicated WIN time

Intervention teacher and aide reduces class size for students not meeting standards.

Curriculum: LLI, Next Lesson, Benchmark Advance

Common Formative Assessments

3 week coaching cycle in grade level PLCs

# Monitoring Progress and Providing Feedback

Walkthroughs by principal and coach with feedback and coaching aligned to goals

Teacher goals in CSTP 6.5 (Collaboration) and/or 4.5 (RtI)

PLC Rubrics from Learning by Doing guide development and implementation of collaboration protocol

Celebrations at staff meetings

Data analysis protocol